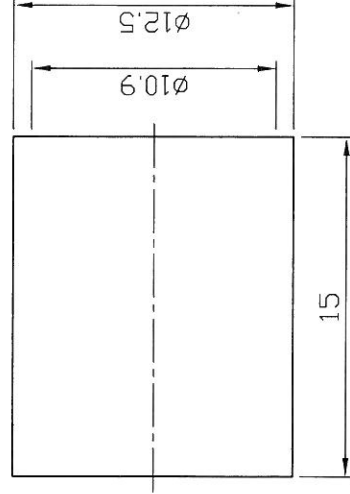
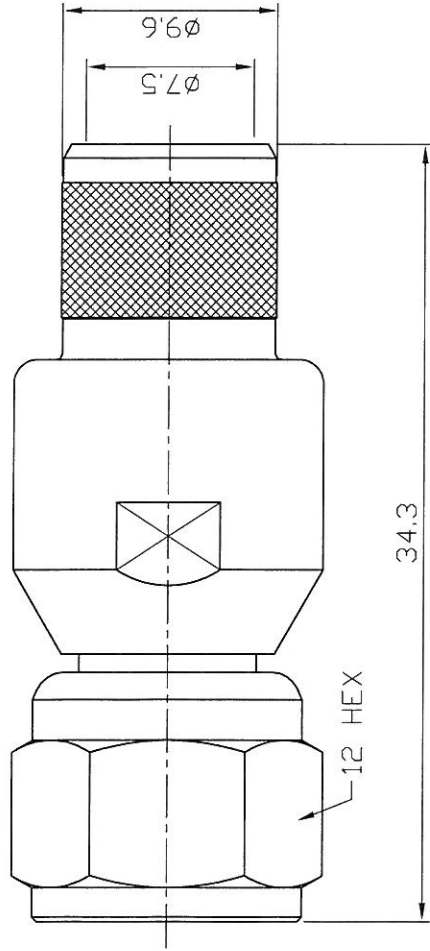


REVISION

ASS. CON. REV.	DESCRIPTION	DATE	APPROVED
-	INITIAL RELEASE	2015/12/04	



NOTES: FINISH (PLATING THICKNESS IN MICRO-INCHES)

1. BRASS.
2. TIN-ZINC-COPPER-ALLOY PL. 100 MIN. OVER COPPER PL. 50 MIN.
3. GOLD PL. 4 MIN. OVER NICKEL-PHOSPHORUS ALLOY PL. 80 MIN. OVER COPPER PL. 20 MIN.

7	FERRULE	COPPER	NOTE 2	1	N3100-0213-8/W	E	DIMENSION ARE MILLIMETERS (UNLESS OTHERWISE SPECIFIED TO OTHERWISE (UNIT: MM))	SCALE: 3 / 1 APPROVED	CONNECTOR REV.	UNIT	JYE BAO CO., LTD. TAIPEI TAIWAN F PLUG CRIMP F3175-L400
6	GASKET	SILICONE		1	F3200-0058-9	A	0.5~5 = ±0.05			MM	
5	CONTACT PIN	NOTE 1	NOTE 3	1	F3175-L400-5/NM	-	5 ~ 10 = ±0.07				
4	BARREL	NOTE 1	NOTE 2	1	BNC3100-0213-4/W	D	10~20 = ±0.10				
3	INSULATOR	TEFLON		1	F3100A-0223-3	-	20~30 = ±0.15				
2	BODY	NOTE 1	NOTE 2	1	F3175-L400-2	-	30~ = ±0.20				
1	SHELL	NOTE 1	NOTE 2	1	F3200-0058-1/W	B					
NO.	DESCRIPTION	MATERIAL	FINISH	QTY	PART NO.	REV.					

JYE BAO CO., LTD.

CABLE ASSEMBLY INSTRUCTION

F3175-L400	DATE	2015/12/04	REV	—
------------	------	------------	-----	---

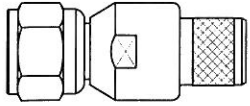


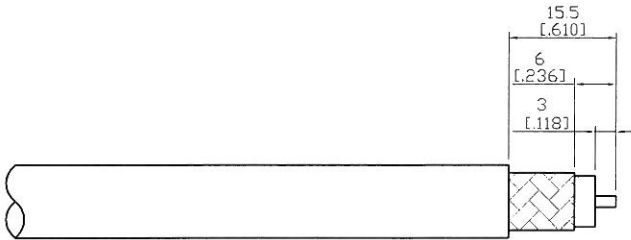
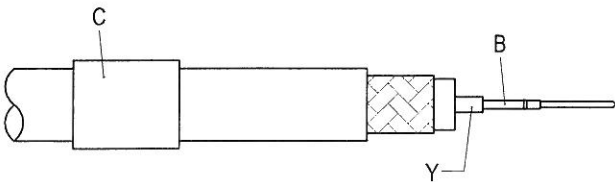
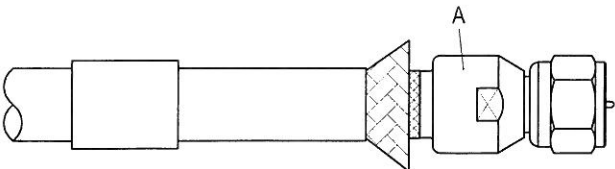
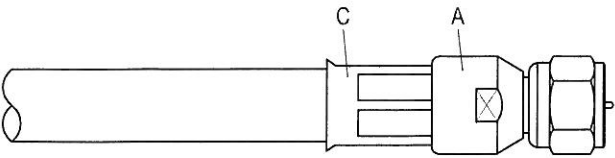
<p>A</p>  <p style="text-align: center;">BODY</p>	<p>B</p>  <p style="text-align: center;">CONTACT PIN</p>	<p>C</p>  <p style="text-align: center;">FERRULE</p>
--	---	---

DIAGRAM	ASSEMBLY INSTRUCTION
	<p>Step 1: STRIP AS SHOWN.</p>
	<p>Step 2: SLIDE FERRULE " C " OVER CABLE. Step 3: PUT PIN " B " ON CENTER CONDUCTOR AND CRIMP IN " Y ". (USE SQUARE 1.6mm/0.063inch SECTION OF INSERT-C)</p>
	<p>Step 4: LOOSEN BRAIDING AND SLIDE CONNECTOR " A " IN PLACE.</p>
	<p>Step 5: SLIDE FERRULE " C " TOWARDS THE CONNECTOR " A " AND CRIMP. (USE 10.7mm/0.421inch HEX SECTION OF INSERT-C)</p>

This part number complies with RoHS.
 Notice: JYEBAO reserves the right to make modifications deemed appropriate.

APPROVED	CHECKED	DRAWING
----------	---------	---------

Albert