

Marine 4-Way Swivel Ratchet Mounts, Adapter Tube, Marifix Barrel Spring

DESCRIPTION

- **MariFix1 / MariFix 2**
 - 4-way swivel ratchet mounts
 - For deck, cabin roof or bulkhead mounting
 - Fast-release locking mechanisms allows antenna to fold down
 - Available in chromed brass or UV resistant polycarbonate
- **ADT**
 - Use the ADT adapting tube or MBS to fix antennas based on mounting with revolving nut on 1" threaded water pipe on the MariFix 1 / MariFix 2.
- **MBS**
 - The MBS (MariFix Barrel Spring) is designed to move and flex with the antenna to prevent damage from strong winds or low hanging objects.
- **MariFix 1 / MariFix 2**
 - The 4-way swivel ratchet mounts permit mounting of marine antennas on slanted decks, cabin roofs or bulkheads
 - Vibration secure and fast-release locking mechanisms make tilting and complete lay-down of the antenna quick and easy
 - The MariFix 1 is made of chromed brass
 - The MariFix 2 is made of UV resistant polycarbonate
 - Max. antenna height with the MariFix 1 and MariFix 2 mounts
 - MariFix 1: Max. 4.5 m
 - MariFix 2: Max. 2.0 m
 - To prevent damage it is recommended to lay down long antenna elements when the vessel is operated at high speed
 - The Marifix mounts are delivered with stainless steel screws/bolts, spring washers, and bolts along with a gasket.
- **ADT**
 - Use the ADT adapting tube or MBS to fix antennas (based on mounting with revolving nut on 1" threaded water pipe) on the MariFix 1 / MariFix 2.
- **MBS**
 - The MBS is designed to move and flex with the antenna to prevent damage from strong winds or low hanging objects
 - The barrel spring is made from stainless steel for long lasting finish.
 - Max. antenna height: 1.2 m.



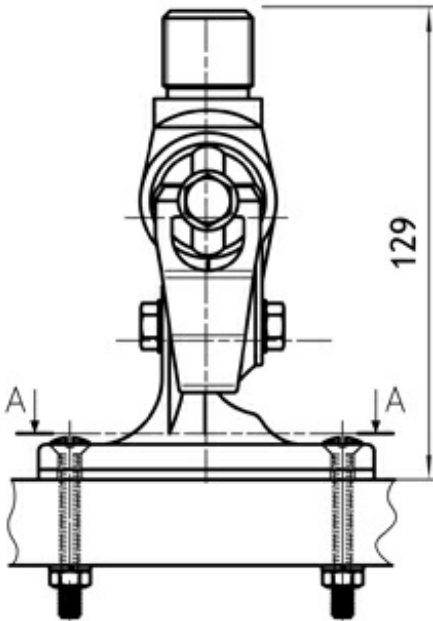
ORDERING

Type	Product No.	Description
MariFix 1	110000050	Heavy-duty, chromed brass ratchet mount for deck or bulkhead mounting.
MariFix 2	110000048	Medium-duty, polycarbonate ratchet mount for deck or bulkhead mounting.
ADT	110000049	Adapting tube.
MBS	110000323	MariFix Barrel Spring

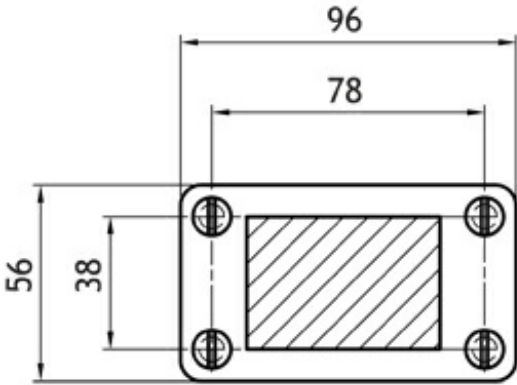
ADDITIONAL DATA

MOUNTING DETAILS

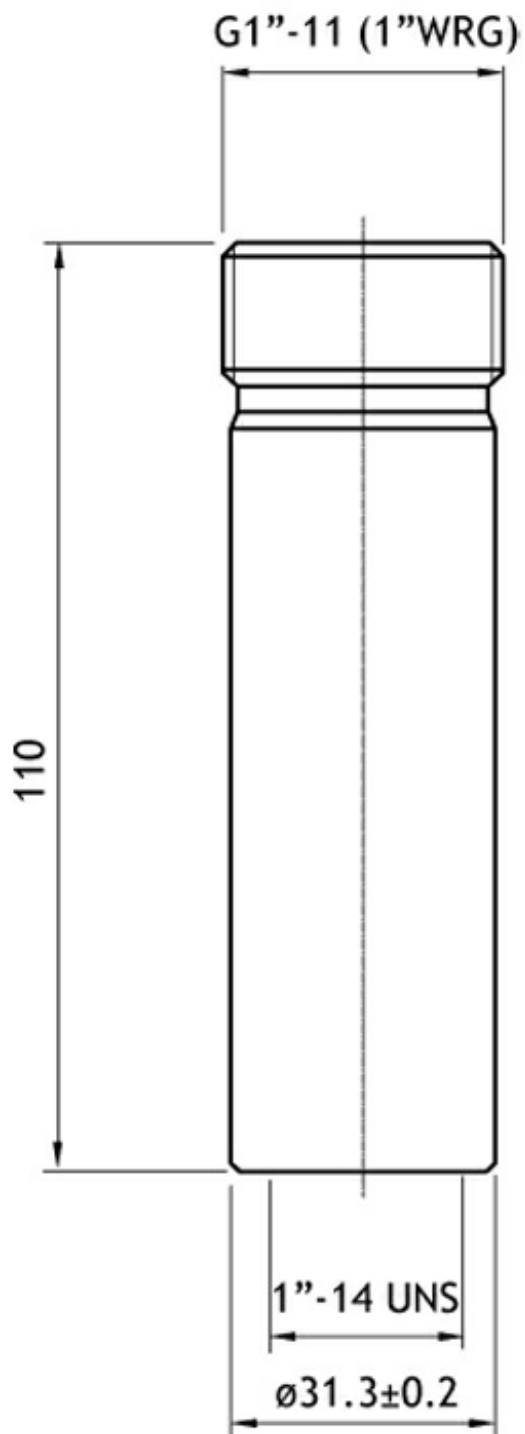
MariFix 1



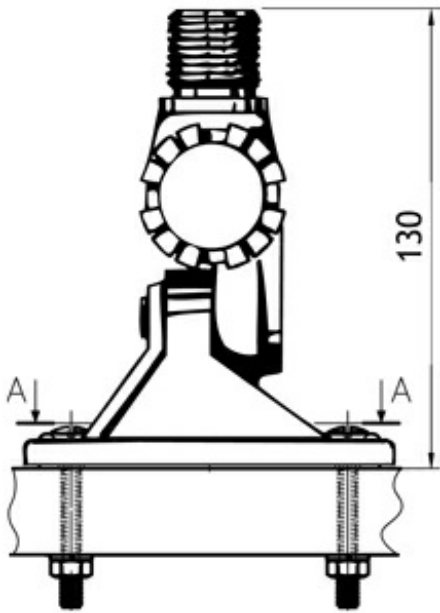
Section A-A



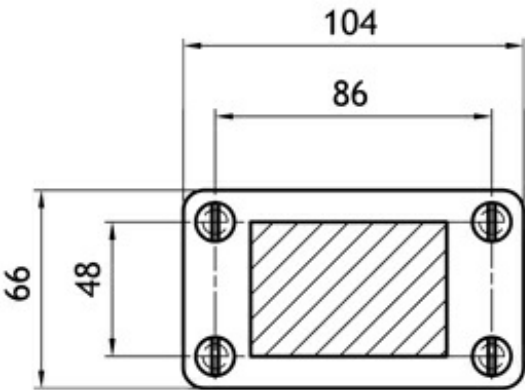
ADT



MariFix 2



Section A-A



MBS

