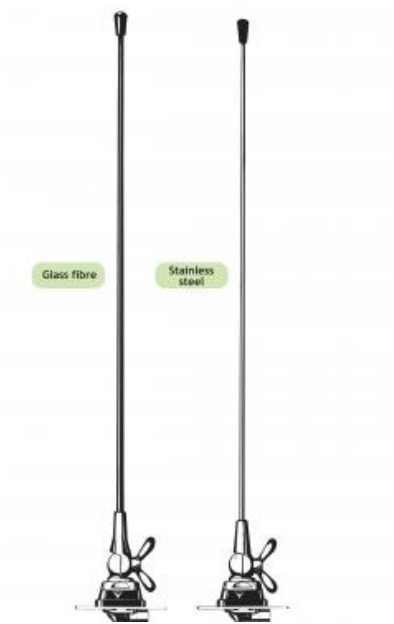


¼ λ Mobile Antenna for the 160 MHz Band

DESCRIPTION

- Sturdy, general-purpose ¼ λ antenna in professional quality.
- Available with glass fiber or stainless steel whip.
- Stainless steel Z-mount with ball-joint and wing screw whip-fastening system.
- Available with bright or black-chromed metal parts (mount and whip):
 - MH 1-Z....: Bright version
 - MH 1-BZ....: Black version
- Simple mounting exclusively with access from the outside.
Models with roof thickness from 2 mm to 7.5 mm mounting from the inside.
- Choice between two connection principles: Z-mount:
 - FME-connection (supplied without cable).
 - ZP4-mount: Permanently attached 4 m cable terminated with FME-connector.



ORDERING

Type	Product No.	Description	Frequency
MH 1-BZP4	130000716	Glassfibre Whip	BZP4-mount with 4 m cable + FME-connector BLACK
MH 1-Z	130000714	Glassfibre Whip	Z-mount with FME-system BRIGHT
MH 1-ZP4	130000715	Glassfibre Whip	ZP4-mount with 4 m cable + FME-connector BRIGHT
MH 1-BZ	130000719	Glassfibre Whip	Z-mount with FME-system BLACK
MH 1-BZP4R	130000717	Stainless Steel Whip	BZP4-mount with 4 m cable + FME-connector BLACK
MH 1-ZR	130000720	Stainless Steel Whip	Z-mount with FME-system BRIGHT
MH 1-ZP4R	130000721	Stainless Steel Whip	ZP4-mount with 4 m cable + FME-connector BRIGHT
MH 1-BZR	130000725	Stainless Steel Whip	Z-mount with FME-system BLACK

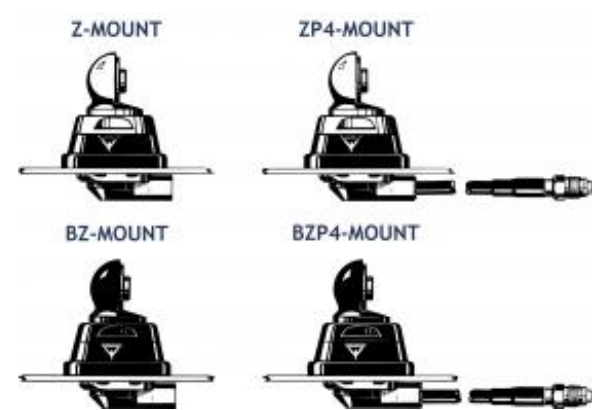
SPECIFICATIONS

Electrical	
Model	MH 1-Z
Frequency	Tunable by cutting within: 144-175 MHz (Also applicable: 175-225 MHz)
Antenna Type	Mobile whip antenna
Polarisation	Vertical
Impedance	50 Ω
Maximum Input Power	150 W
Gain (EIA RS-329-1)	0 dB

Mechanical	
Materials	Whip: Conical glass fiber or stainless steel Chromed brass Mount: Chromed brass Weather- and shockproof plastics Stainless steel
Installation Torque	7.5 +/- 1 Nm
Colour	Bright or black, see above
Height	53 mm / 2.09 in.
Weight	Z-version: Approx. 150 g ZP4-version: Approx. 300 g
Mounting	21mm dia. hole (For roof thicknesses 2 mm up to 7.5 mm mounting hole should be 22mm dia.)
Mounting Plate Thickness	Max. 2.0 mm (Models up to 7.5 mm on request)

ADDITIONAL DATA

□

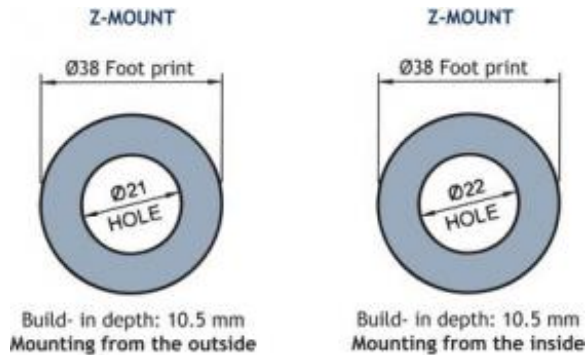


INSTALLATION

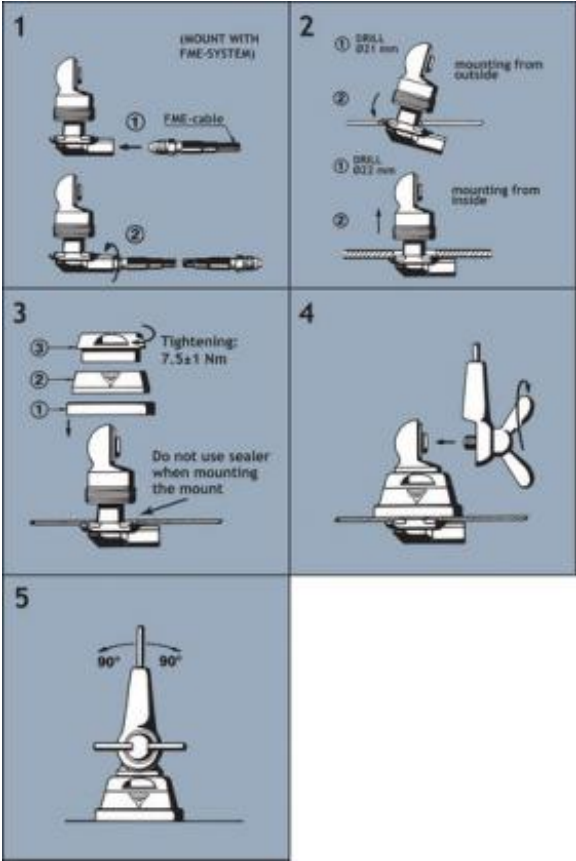
This antenna is provided with type Z-mount. The whip is fastened to the mount by means of our standard ball-joint and wing screw system. The adjustable ball-joint ensures that the whip can always be mounted in a vertical position independent of the angle of the installation spot.

The Z-mount is particularly well suited for mounting on car-roofs because of its ability to be installed exclusively with access from the outside. The Z-Mount for roof thickness from 2 mm to 7.5 mm must be mounted from the inside. However, the antenna can be installed anywhere on the car, as the BZ-mount is equally well suited for mounting on e.g. trunk or wing.

1. INSTALLATION DIMENSIONS



2. INSTALLATION STEPS

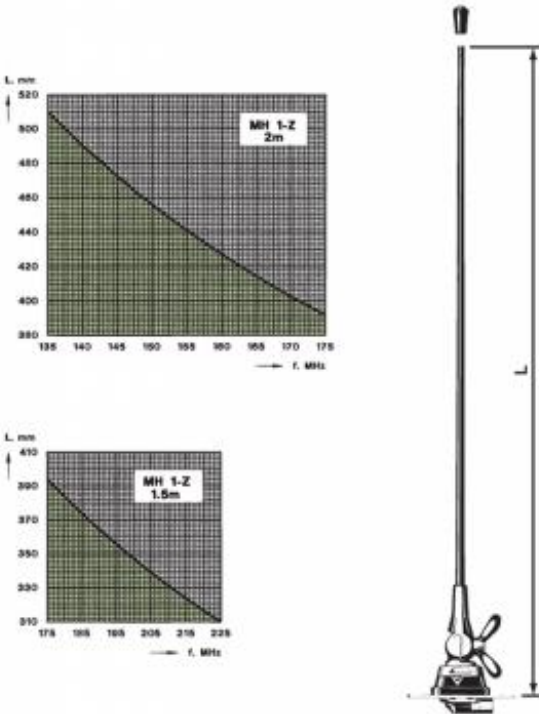


Do not use sealer on rubber gasket or other places.

3. TUNING

The antenna should always be tuned using an SWR-meter.
The cutting diagrams below serve as a guide for this procedure.

GLASS FIBRE WHIP



STAINLESS STEEL WHIP

