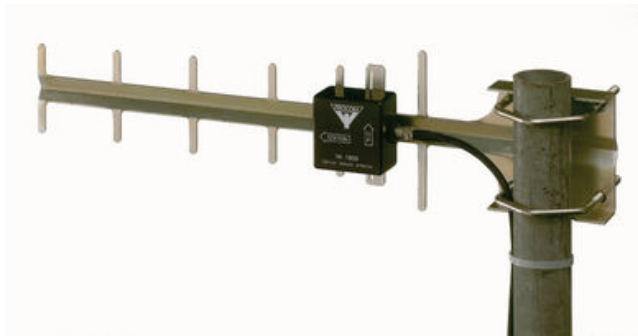


YA 1800

Low-Cost Holiday and Weekend Cottage Directional Antenna for Cellular Networks in the 1800 MHz Band

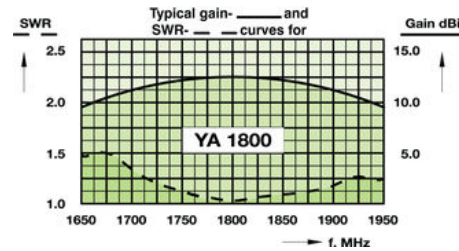
DESCRIPTION

- Low-cost and low-weight directional antenna.
- Ideal for use on caravans, mobile homes and at weekend cottages.
- Significant improvement of the quality of the mobile communication in areas with unsatisfactory coverage (YA 1800 to be directed towards the nearest base station).
- Approx. 10 dBi gain.
- For use with 1800 MHz cellular networks (DCS 1800, PCN 1800, DECT and similar networks).
- For mobile telephones being used in "semi-stationary" installations.
- "Built-in" mounting bracket.
- Supplied with fittings and bolts for mounting on 30 - 50 mm diameter mast tube.



SPECIFICATIONS

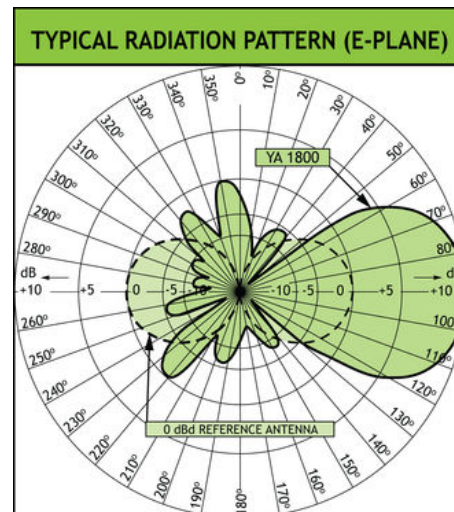
ELECTRICAL	
MODEL	YA 1800
ANTENNA TYPE	7-element Yagi-antenna
FREQUENCY	1700 – 1900 MHz
IMPEDANCE	Nom. 50 Ω
POLARISATION	Linear (vertical or horizontal dep. on orientation)
GAIN	10 dBi
FRONT-TO-BACK-RATIO	≥ 15 dB
HALF-POWER BEAMWIDTH	Approx. 50° (H-plane)
BANDWIDTH	200 MHz
SWR	≤ 1.5
MAX. POWER	25 W
MECHANICAL	
MATERIALS	Antenna: Gold aludine, Aluminium Fittings: Stainless steel
COLOUR	Aludine "gold"
TOTAL LENGTH	426 mm
MAX. ELEMENT HEIGHT	108 mm
WEIGHT	250 g (incl. bolts)
CONNECTORS	FME-connector (cable to be ordered separately)
MOUNTING	On 30–50 mm dia. mast tube



With the YA 1800 you will experience a significant improvement of the quality of your communication on the 1800 MHz cellular networks (DCS 1800, PCN 1800, DECT and similar networks). The antenna makes it possible to use your mobile telephone in areas with a poor coverage and where it is sometimes very difficult to obtain and maintain a satisfactory connection. The YA 1800 is ideal for use on caravans, mobile homes, at weekend cottages and other places where the mobile telephone is used in "semi-stationary" installations.

INSTALLATION STEPS

- Mount the antenna on a 30-50 mm diameter mast tube using the accompanying fittings and bolts (see illustration on the other page). The antenna is to be oriented as indicated on the connection box of the antenna.
- Connect the antenna to the mobile telephone using an FME-cable of appropriate length and an adapter for connection of an exterior antenna to the handportable.
- Direct the antenna towards the nearest base station for the 1800 MHz cellular network in question. The correct direction may be determined using the field strength indicator on the mobile telephone:
 - Turn on the telephone and note the field strength level on the indicator.
 - Rotate the antenna (in the horizontal plane) while observing the field strength indicator.
 - Choose the direction in which the highest field strength level is observed and fasten the antenna.



PROCOM A/S reserve the right to amend specifications without prior notice.

16/03/2010