

colinear 4 dB Mobile Antenna for the 900 MHz Band

DESCRIPTION

- > 4 dB mobile antenna with black-chromed, stainless steel whip.
- > 3 models, type "l", "m" and "h", cover band segments suiting the most common 900 MHz CELLULAR networks such as EAMPS, ETACS, NMT-900 and EGSM.
- > Stainless steel ZG-mount with M8 x 1-thread whip-fastening system.
- > Simple mounting exclusively with access from the outside.
- > Choice between two connection principles: ZG-mount: FME-connection (supplied without cable).
- > ZGP4-mount: Permanently attached 4 m low loss cable terminated with FME-connector.



ORDERING

| Type | Product No. | Description | Frequency |
|---------------|-------------|---|------------------------------|
| MU 904-ZG/l | 130001182 | ZG-mount with FME | 824 - 894 MHz (EAMPS) |
| MU 904-ZG/m | 130001185 | | 872 - 950 MHz (ETACS) |
| MU 904-ZG/h | 130001180 | | 880 - 960 MHz (EGSM&NMT-900) |
| MU 904-ZGP4/l | 130001184 | ZGP4-mount with 4 m cable and FME-connector | 824 - 894 MHz (EAMPS) |
| MU 904-ZGP4/m | 130001186 | | 872 - 950 MHz (ETACS) |
| MU 904-ZGP4/h | 130001181 | | 880 - 960 MHz (EGSM&NMT-900) |

SPECIFICATIONS

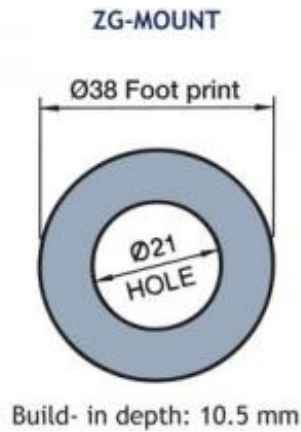
| Electrical | |
|---------------------|---|
| Model | MU 904-ZG/... |
| Frequency | 900 MHz-band covered by three models |
| Antenna Type | Collinear mobile antenna |
| Polarisation | Vertical |
| Impedance | 50 Ω |
| Maximum Input Power | 60 W |
| Gain (EIA RS-329-1) | 4 dB |
| Mechanical | |
| Materials | Whip: Stainless steel and brass, black-chromed Mount: Black-chromed brass Weather- and shockproof plastics Stainless steel |
| Installation Torque | 7.5 +/- 1 Nm |
| Colour | Black |
| Height | 320 mm / 12.60 in. |
| Weight | ZG-version: Approx. 100 g ZGP4-version: Approx. 240 g |
| Mounting | 21 mm dia. hole |

ADDITIONAL DATA

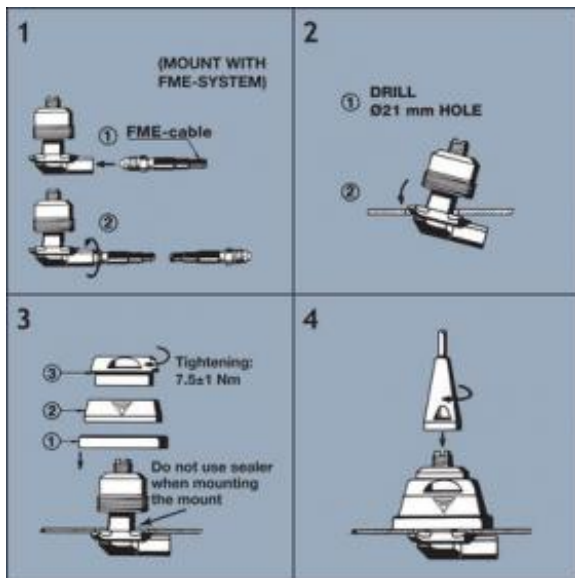
INSTALLATION

This antenna should always be mounted on the car roof to ensure best omnidirectional coverage. The antenna is provided with our type ZG-mount for mounting from the outside in a 21 mm dia. hole.
 The ZG-mount is provided with an M8 x 1 thread mount system. This construction meets the demand for a low-profile mobile mount with a slim appearance and with protection against theft of the antenna whip.
 When cleaning the car in car-washing machines, the whip is easily removed using a spanner, size 12 mm. The whip is refitted again by screwing it onto the thread stud and tightening it with the spanner.

1. INSTALLATION DIMENSIONS



2. INSTALLATION STEPS



Do not use sealer on rubber gasket or other places.

3. TUNING

The antenna is delivered factory-tuned and requires no further tuning.

