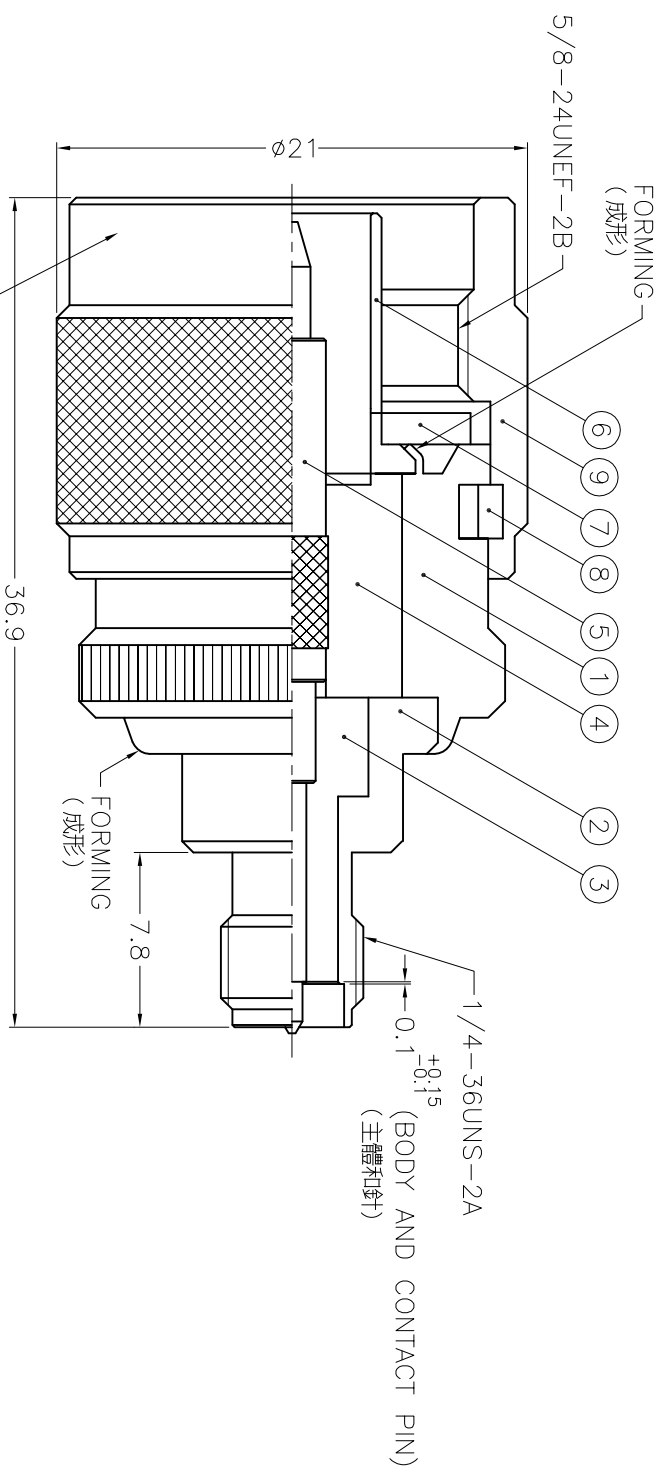


ISS	ZONE	DESCRIPTION \ PER REQUEST \ DATE



NOTES: FINISH (PLATING THICKNESS IN MICRO-INCHES)  
 1. BRASS PER QQ-B-626  
 2. NICKEL PL. 100 MIN. THICK OVER COPPER STRIKE  
 3. GOLD PL. 3 MIN. THICK OVER NICKEL PL. 100 MIN. THICK  
 4. TEFLON MIL-P-19468

NO.	DESCRIPTION	MATERIAL	FINISH	Q'TY	DRAWING NO.
9	SHELL	NOTE 1	NOTE 2	1	N5000-1-B
8	RETAINER RING	SUS 304	NATURAL	1	N5000-7-C
7	GASKET	SILICONE	RED	1	GS-156/8X15
6	CONTACT BODY	NOTE 1	NOTE 2	1	N5000-5
5	CONTACT PIN	NOTE 6	NOTE 3	1	NM-SMAM1-1
4	INSULATOR	NOTE 4	NATURAL	1	NS00ABJ08A
3	INSULATOR	NOTE 4	NATURAL	1	NS11ACP01A
2	BODY	NOTE 1	NOTE 2	1	NM-SMAF1-4
1	BODY	NOTE 1	NOTE 2	1	NM-SMAF1-2

DIMENSIONS ARE IN MILLIMETERS  
 UNLESS OTHERWISE SPECIFIED  
 TOLERANCES  
 0.5-6 = ±0.2  
 6-30 = ±0.4  
 30-120 = ±0.6  
 120-315 = ±1  
 315-1000 = ±1.6  
 1000-2000 = ±2.4

PART NO.	APPROVED	DATE
		07-07-03
CHECKED	DATE	
		07-07-03
DRAWN	DATE	
ALAN		07-07-03

FILE NO.	F:\DWG\NM\RSMAM1\50\NT3G
ITEM NO.	03M-61M1-NA-5-F
<b>Amphenol</b> Danbury, CT, USA - Taiwan - Shenzhen, China	
TITLE N PLUG TO SMA REVERSE POLARITY JACK ADAPTOR	
DRAWING NO.	NM-RSMAM1-NT3G-50