

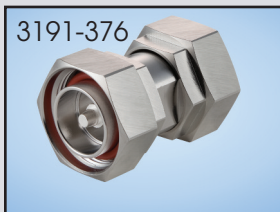
# SilverLine®-LPA

DIN, Mini-DIN & Type N for PIM Sensitive Systems

## Low PIM Adapters

ISO 9001 Certified

- Cellular or Wireless
- Tower or in-building
- Production or laboratory

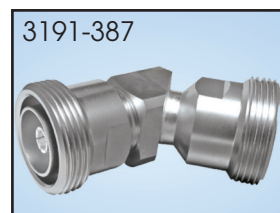


SilverLine®-LPA low PIM adapters exhibit exceptional PIM performance in any cellular or wireless frequency range.

Times uses only the most robust designs for long product life regardless of the environment. All product is 100% tested and individually packaged prior to shipping.



Two 45° Configurations!



# SilverLine®-LPA

Mechanical Specifications			
Body and Coupling Nut	Tri-metal plated brass		
Center Contact	Gold or Silver Plated		
Mating Life	500 min*		
Temperature Range	-40° C to +85° C		
Electrical Specifications			
Frequency, Max	All straight configurations	45° or right angle	
	6 Ghz	3Ghz	
Impedance	50 Ohms		
VSWR, Max	All straight configurations	45° or right angle	
	1.1:1 (3 Ghz) 1.2:1 (6 Ghz)	1.25:1	
PIM* (IM3)	-125 dBm +/- 3 dBm (2 x 43 dBm carriers)		
Insertion Loss, Max (dB)	DIN-N or N-N	DIN-DIN	45° or right angle
	3 Ghz	0.10	0.10
	6 Ghz	0.12	N/A

\* Interfaces must be clean and proper torque forces applied

## Ordering Information

### Individual Adapters:

3191-331 = 7-16 female bullet  
 3191-332 = 7-16 male/female right angle  
 3191-376 = 7-16 male bullet  
 3191-377 = 7-16 male/female  
 3191-378 = 7-16 male/Type N male  
 3191-379 = 7-16 male/Type N female  
 3191-380 = 7-16 female/Type N female  
 3191-381 = 7-16 female/Type N male  
 3191-382 = 7-16 male/female 45°  
 3191-387 = 7-16 female/female 45°  
 3191-394 = 4.1/9.5 male/7-16 female  
 3191-395 = 4.1/9.5 female/7-16 female  
 3191-396 = Type N male/Type N male  
 3191-397 = Type N female/Type N female

### Kit Designator

A  
B  
C  
D  
E  
F  
G  
H  
I  
J  
K  
L  
M  
N

### Kit Designator

3191-411 = 4.1/9.5 female/Type N female O  
 3191-412 = 4.1/9.5 female/Type N male P  
 3191-413 = 4.1/9.5 male/Type N female Q  
 3191-414 = 4.1/9.5 male/Type N male R  
 3191-415 = 4.3/10 female/7-16 female S  
 3191-416 = 4.3/10 male/7-16 female T  
 3191-417 = 4.3/10 female/Type N male U  
 3191-418 = 4.3/10 male/Type N male V  
 3191-419 = 4.1/9.5 female/7-16 male W  
 3191-420 = 4.1/9.5 male/7-16 male X  
 3191-421 = 4.3/10 female/7-16 male Y  
 3191-422 = 4.3/10 male/Type N female Z

### Standard (small) SilverLine Adapter Kits: (Hard case with foam insert containing seven adapters)

660-0234: Contains one each A, D, E, F, G, H and I  
 660-0235: Contains one each A, D, G, H, I, K and L  
 660-0236: Contains one each A, C, M, T, W, Y and Z

*Specifications subject to change without notice*

### Custom (Large) SilverLine Adapter Kits: (Hard case with foam. 10 pieces min, 20 max (max of four 45's or r/a's combined)

SLK-XXXXX . . . (Insert designator from above in alphabetical order (20 max) . Duplicate designators acceptable)



World Headquarters: 358 Hall Avenue, Wallingford, CT 06492 • Tel: 203-949-8400, 1-800-867-2629 Fax: 203-949-8423

International Sales: +1 203.949.8503 • +800.867.2629

China Sales: TMC Building 4, No. 318 Yuanshan Road, Xinzhuang Industrial Park, Shanghai, China 201108 Tel: 86-21-5176-1209 Fax: 86-21-64424098  
[www.timesmicrowave.com](http://www.timesmicrowave.com)

© 2015, Times Microwave Systems, Wallingford, CT 06492

SL-LPA 06/15