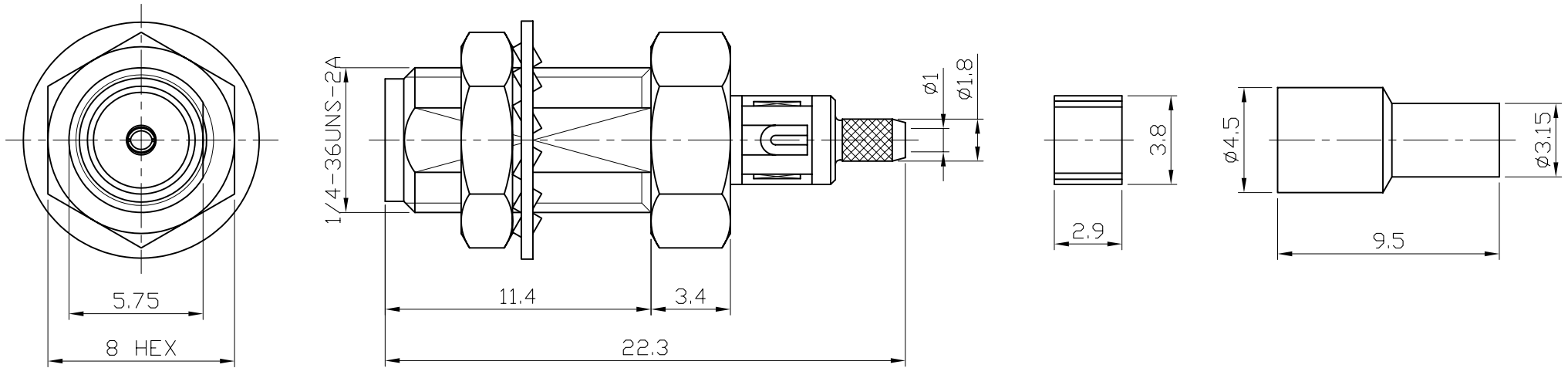


REVISION			
REV.	DESCRIPTON	DATE	APPROVED
T	INITIAL RELEASE	2014/04/25	



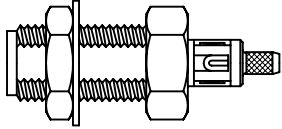

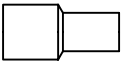

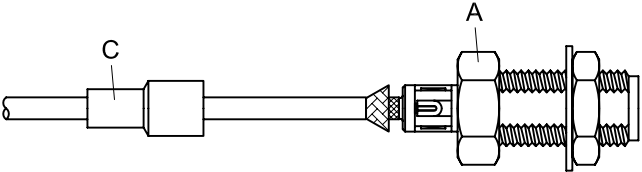
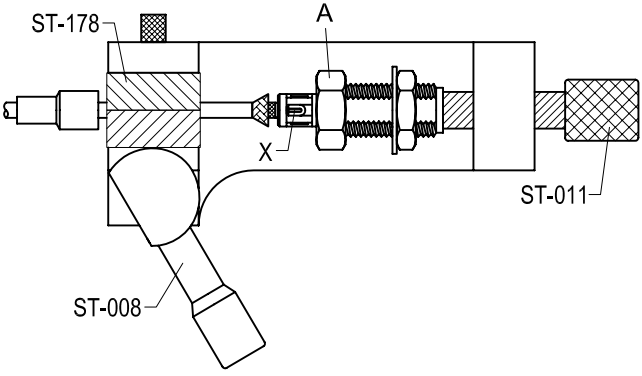
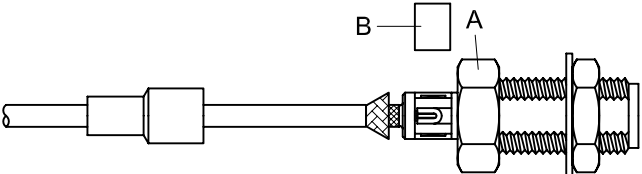
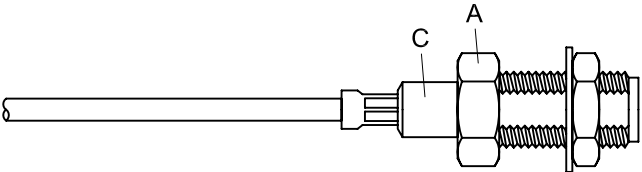
NOTES: FINISH (PLATING THICKNESS IN MICRO-INCHES)

1. BRASS.
2. BERYLLIUM COPPER.
3. GOLD PL. 4 MIN. OVER NICKEL-PHOSPHORUS ALLOY
- PL. 80 MIN. OVER COPPER PL. 20 MIN.

NO.	DESCRIPTION	MATERIAL	FINISH	Q'TY	PART NO.									
8	FERRULE		NOTE 1	NOTE 3	1	N9146A-0178-6/NM	DIMENSION ARE MILLIMETERS UNLESS OTHERWISE SPECIFIED TOLERANCES 0 ~ 5 = ±0.05 5 ~ 10 = ±0.07 10 ~ 20 = ±0.10 20 ~ 30 = ±0.15 30 ~ = ±0.20	SCALE	4 / 1	REV	T	UNIT	MM	<b>JYE BAO CO., LTD.</b> TAIPEI TAIWAN
7	COVER		NOTE 1	NOTE 3	1	N9146A-0178-5/NM		APPROVED	DATE					
6	HEX NUT		NOTE 1	NOTE 3	1	SMA8500-5/NM		CHECKED	DATE			TITLE	SMA JACK CRIMP FOR BULKHEAD	
5	WASJER		NOTE 1	NOTE 3	1	SMA8500-4/NM		DRAWING	DATE			DRAWING NO.	SMA8100LB-0178	
4	BARREL		NOTE 1	NOTE 3	1	SMA81LB-0178-4/NM								
3	CONTACT PIN		NOTE 2	NOTE 3	1	SMA81LB-0178-3/NM								
2	INSULATOR	TEFLON			1	SMA8100L-0316-2								
1	BODY		NOTE 1	NOTE 3	1	SMA8100L-0316-1/NM								

# JYE BAO CO., LTD.

## CABLE ASSEMBLY INSTRUCTION

SMA8100LB-0178	DATE	2014/04/29	REV	—
<p>A</p>  <p style="text-align: center;">BODY + WASHER + HEX NUT</p>	<p>B</p>  <p style="text-align: center;">COVER</p>	<p>C</p>  <p style="text-align: center;">FERRULE</p>		
DIAGRAM	ASSEMBLY INSTRUCTION			
	Step 1: STRIP AS SHOWN.			
	Step 2: SLIDE FERRULE " C " OVER CABLE. Step 3: LOOSEN BRAIDING AND SLIDE CONNECTOR " A " IN PLACE.			
	Step 4: INSERT PREPARED CABLE INTO CONNECTOR BODY " A " AND USE SOLDERING FIXTURE " ST-008 ", INSERT TOOL " ST-178 " AND LOCATOR TOOL " ST-011 " TO FIX THE CONNECTOR. SOLDER IN " X " .			
	Step 5: PUT COVER " B " ON BODY " A " .			
	Step 6: SLIDE FERRULE " C " TOWARDS THE CONNECTOR " A " AND CRIMP IN " S " .			
<p>This part number complies with RoHS. Notice: JYEBAO reserves the right to make modifications deemed appropriate.</p>				
APPROVED	CHECKED	DRAWING	<i>Albert</i>	