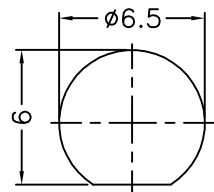
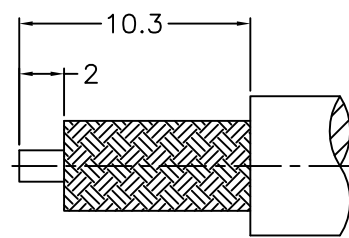


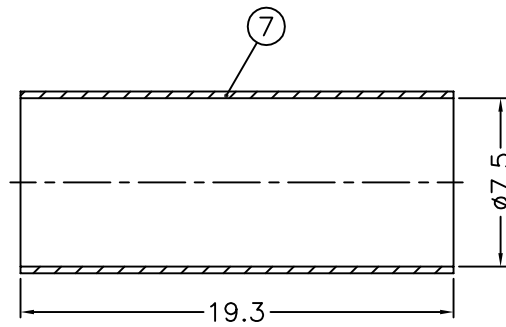
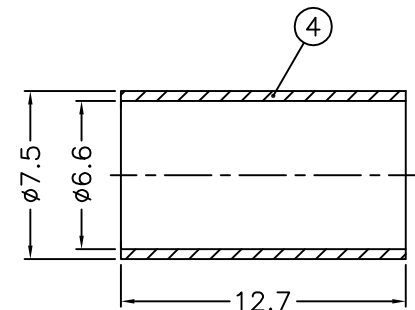
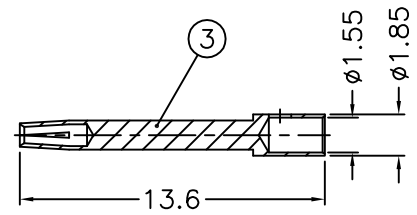
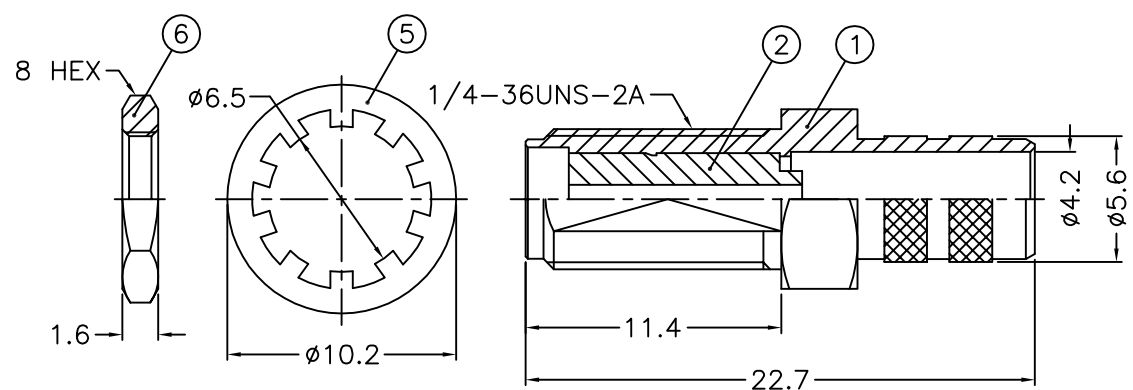
REVISIONS			
ISS	ZONE	DESCRIPTION\PER REQUEST\DATE	



RECOMMENDED MOUNTING HOLE
(建議架設孔)



RECOMMENDED CABLE STRIPPING DIM'S
(建議剝線尺寸)



NOTES: FINISH (PLATING THICKNESS IN MICRO-INCHES)
 1. BRASS
 2. THIN GOLD OVER NICKEL PL. 50 MIN. THICK OVER COPPER PL. 50 MIN. THICK
 3. BERYLLIUM COPPER
 4. GOLD PL. 3 MIN. THICK OVER NICKEL PL. 50 MIN. THICK OVER COPPER PL. 50 MIN. THICK
 5. TEFLON

1. CRIMPED FERRULE
 HEX CRIMP SIZE .255"
 2. CONTACT PIN TO SOLDER

6	HEAT SHRINK TUBING		BLACK	1	HT-75-81-193
6	HEX NUT	NOTE 1	NOTE 2	1	HN-8-1436-16
5	LOCK WASHER	NOTE 1	NOTE 2	1	LW-65-102-05
4	FERRULE	NOTE 1	NOTE 2	1	FR-66-75-127
3	CONTACT PIN	NOTE 3	NOTE 4	1	1436-6411A1-3 1.55
2	INSULATOR	NOTE 5	NATURAL	1	1436-6411A1-2T
1	BODY	NOTE 1	NOTE 2	1	1436-6411A1-1 -16

DIMENSIONS ARE IN MILLIMETERS			PART NO.	
UNLESS OTHERWISE SPECIFIED TOLERANCES			APPROVED	
0.5-6 = ±0.2	DATE		10-12-'12	
6-30 = ±0.4	DATE		10-12-'12	
30-120 = ±0.6	DATE		10-12-'12	
120-315 = ±1	DATE		10-12-'12	
315-1000 = ±1.6	DATE		10-12-'12	
1000-2000 = ±2.4	DATE		10-12-'12	
SCALE 3/1	ISSUE	A	TITLE	
			SMA BULKHEAD CRIMP JACK (FOR RG-8/X, LMR-240)	
			DRAWING NO. 1436-6411A8-16-50	
			FILE NO. R:\D\G\DWG\1436\6411A8\16\50-1	