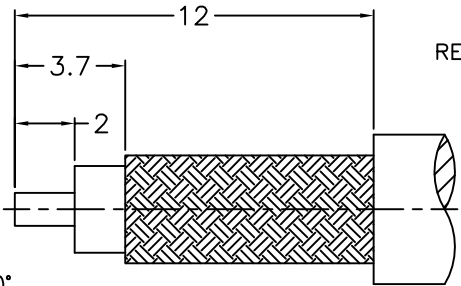


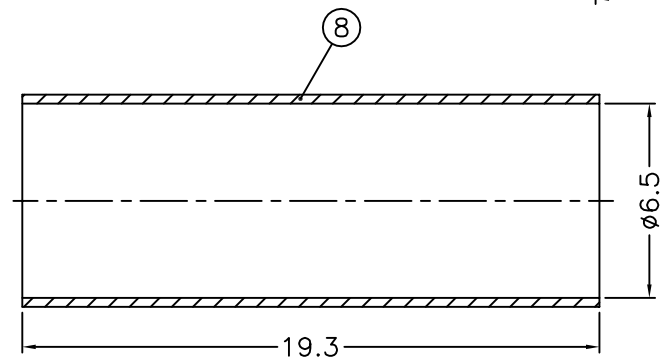
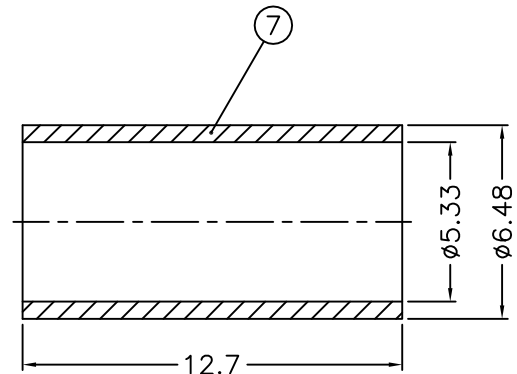
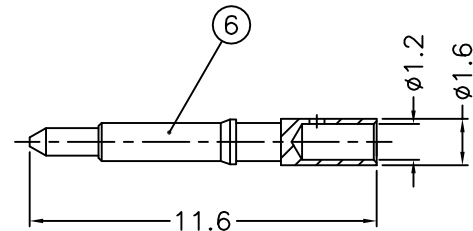
1 2 3 4 5 6 7 8

REVISIONS		
ISS	ZONE	DESCRIPTION\PER REQUEST\DATE

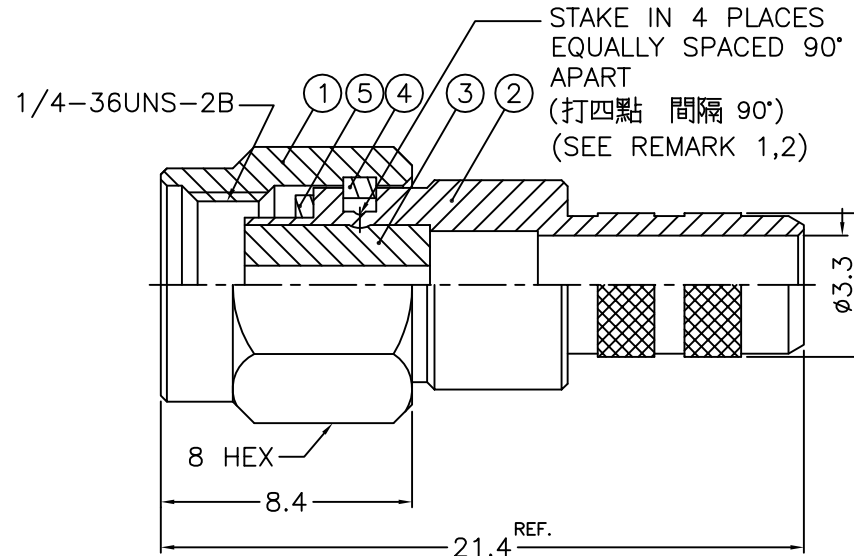


REMARK:1. NO.3 MUST WITHSTAND A 6 lbs. MIN. PUSHOUT FORCE FROM NO.2 AFTER STAKING OPERATION
 2. REMARK 1 IS MAINTAINED BY STAMPING THE FOUR POINTS SHOWN ON THE DRAWING WITHOUT PUNCTURING NO.2
 (1. 打四點後零件3由零件2推出至少必須承受6磅推力)
 (2. 打四點後除需符合備註1要求外且不可擊穿零件2)

RECOMMENDED CABLE STRIPPING DIM'S (建議剝線尺寸)



1. CRIMPED FERRULE HEX CRIMP SIZE .213"
 2. CONTACT PIN TO SOLDER



NOTES: FINISH (PLATING THICKNESS IN MICRO-INCHES)
 1. BRASS
 2. THIN GOLD OVER NICKEL PL. 50 MIN. THICK OVER COPPER PL. 50 MIN. THICK
 3. GOLD PL. 3 MIN. THICK OVER NICKEL PL. 50 MIN. THICK OVER COPPER PL. 50 MIN. THICK
 4. TEFLON

8	HEAT SHRINK TUBING		BLACK	1	HT-65-71-193
7	FERRULE	COPPER	NOTE 2	1	FR-533-648-127C
6	CONTACT PIN	NOTE 1	NOTE 3	1	1436-1111A4-6-1.2
5	GASKET	SILICONE	RED	1	GS-43-60-06
4	RETAINER RING	SUS303	NATURAL	1	1436-1000-4
3	INSULATOR	NOTE 4	NATURAL	1	1436-1111A4-3-50T
2	BODY	NOTE 1	NOTE 2	1	1436-1111A4-2-08
1	SHELL	NOTE 1	NOTE 2	1	1436-1000-1

DIMENSIONS ARE IN MILLIMETERS
 UNLESS OTHERWISE SPECIFIED TOLERANCES
 0.5-6 = ±0.2
 6-30 = ±0.4
 30-120 = ±0.6
 120-315 = ±1
 315-1000 = ±1.6
 1000-2000 = ±2.4

PART NO.	
APPROVED	DATE 02-13-'14
CHECKED	DATE 02-13-'14
DRAWN	DATE 02-13-'14

TITLE	SMA CRIMP PLUG (FOR TIMES LMR-200)
DRAWING NO.	1436-1111A17-08-50
FILE NO.	R:\D\G\DWG\1436\1111A17\08\50-1

NO.	DESCRIPTION	MATERIAL	FINISH	Q'TY	DRAWING NO.	SCALE	4/1	ISSUE	A

1 2 3 4 5 6 7 8