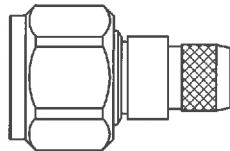

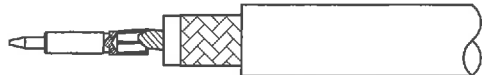

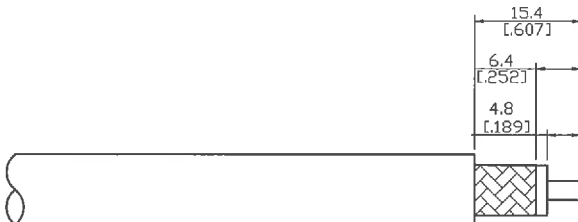
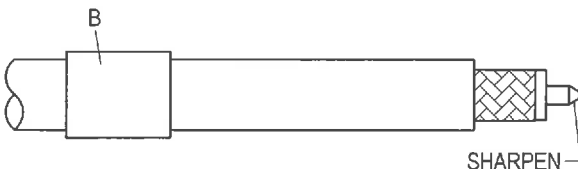
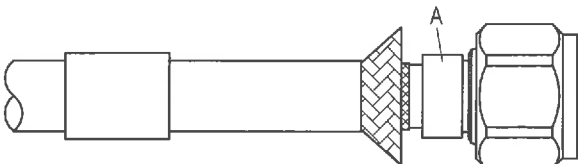
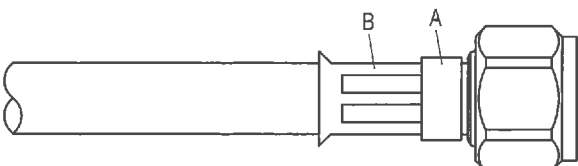
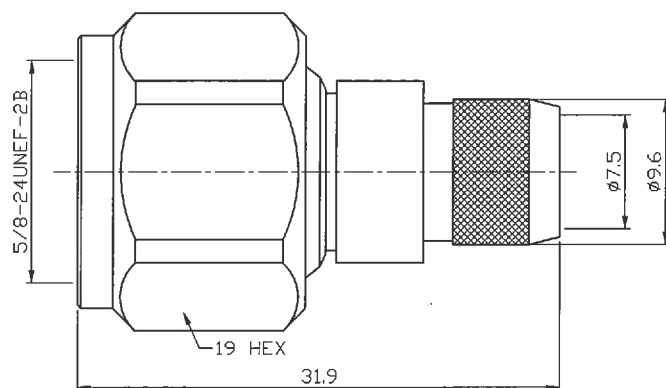


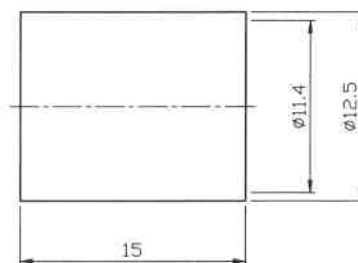
JYE BAO CO., LTD.

CABLE ASSEMBLY INSTRUCTION

N31BAEZ-L400		DATE	2014/04/29	REV	—
<div><div>A</div><div></div><div>BODY</div></div> <div><div>B</div><div></div><div>FERRULE</div></div>		<div>NOTE: THE STRIPPED CABLE AND POINTED CENTER CONDUCTOR MUST BE STRAIGHT (180°), IF NOT LEAVES WILL BREAK EASILY.</div> <div><div>NG</div><div></div></div> <div><div>OK</div><div></div></div>			
DIAGRAM		ASSEMBLY INSTRUCTION			
<div></div>		<div>Step 1: STRIP AS SHOWN.</div>			
<div><div>B</div><div></div><div>SHARPEN</div></div>		<div>Step 2: SHARPEN CENTER CONDUCTOR TIP.</div> <div>Step 3: SLIDE FERRULE "B" OVER CABLE.</div> <div>NOTE: THE STRIPPED CABLE AND POINTED CENTER CONDUCTOR MUST BE STRAIGHT (180°), IF NOT LEAVES WILL BREAK EASILY.</div>			
<div></div>		<div>Step 4: LOOSEN BRAIDING AND SLIDE CONNECTOR "A" IN PLACE.</div>			
<div><div>B</div><div>A</div><div></div></div>		<div>Step 5: SLIDE FERRULE "B" TOWARDS THE CONNECTOR "A" AND CRIMP.</div> <div>(USE 10.7mm/0.421inch HEX SECTION OF INSERT-C)</div>			
<div>This part number complies with RoHS.</div> <div>Notice: JYEBAO reserves the right to make modifications deemed appropriate.</div>					
APPROVED		CHECKED		DRAWING	
				Albert	



REVISION				
ASS. REV.	CON. REV.	DESCRIPTION	DATE	APPROVED
N/A	T	INITIAL RELEASE	2016/08/18	



MATERIAL:
 INSULATORS - TEFLON.
 GASKET - SILICONE RUBBER.
 CENTRE CONTACT - BRASS. (GOLD PLATED)
 OTHER METAL PARTS - BRASS. (TIN-ZINC-COPPER-ALLOY PLATED)

DIMENSION ARE MILLIMETERS	SCALE	ASSEMBLY REV	CONNECTOR REV	UNIT	JYE BAO CO., LTD. TAIPEI TAIWAN	
UNLESS OTHERWISE SPECIFIED TOLERANCES (UNIT MM)	10 / 1	N/A	T	MM		
0.5~ 5= ± 0.05	APPROVED				DATE	TITLE
5~10 = ± 0.07	CHECKED				DATE	N PLUG CRIMP
10~20 = ± 0.10	DRAWING				DATE	DRAWING NO.
20~30 = ± 0.15						N31BAEZ-L400
30~ = ± 0.20						