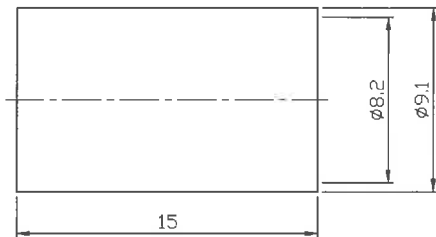
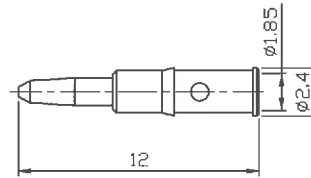
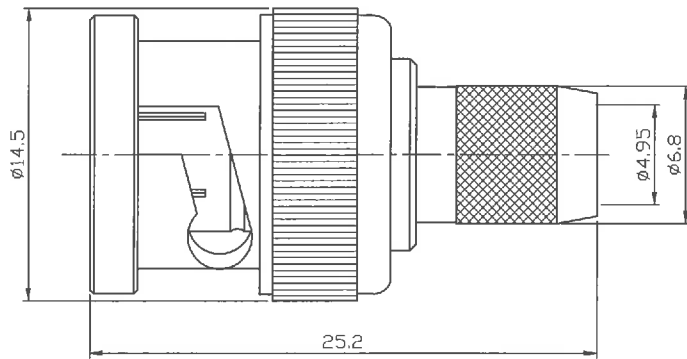


REVISION

REV.	DESCRIPTION	DATE	APPROVED
-	INITIAL RELEASE	2013/11/29	



NOTES: FINISH (PLATING THICKNESS IN MICRO-INCHES)

1. BRASS.
2. TIN-ZINC-COPPER-ALLOY PL. 100 MIN.  
OVER COPPER PL. 50 MIN.
3. GOLD PL. 4 MIN. OVER NICKEL-PHOSPHORUS ALLOY  
PL. 80 MIN. OVER COPPER PL. 20 MIN.

NO.	DESCRIPTION	MATERIAL	FINISH	QTY	PART NO.
9	FERRULE	NOTE 1	NOTE 2	1	N3100-5DFB-8/W
8	GASKET	SILICONE		1	BNC3100-7
7	WASHER	NOTE 1	NOTE 2	1	BNC3100-6/W
6	SPRING	SK 5		1	BNC3100-5
5	WASHER	NOTE 1	NOTE 2	1	BNC3100-4/W
4	CONTACT PIN	NOTE 1	NOTE 3	1	TNC3100-L300-4/NM
3	INSULATOR	TEFLON		1	AD-B3M8-4
2	BODY	NOTE 1	NOTE 2	1	BNC3100-L300-2/W
1	SHELL	NOTE 1	NOTE 2	1	BNC3100-1/W

DIMENSION ARE IN MILLIMETERS
UNLESS OTHERWISE SPECIFIED TOLERANCES
0 ~ 5 = ±0.05
5 ~ 10 = ±0.07
10 ~ 20 = ±0.10
20 ~ 30 = ±0.15
30 ~ = ±0.20

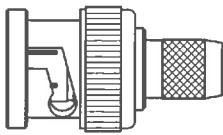


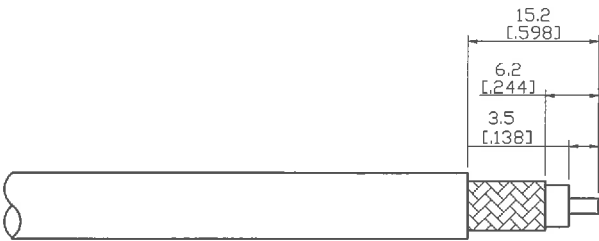
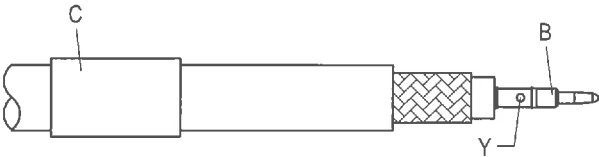
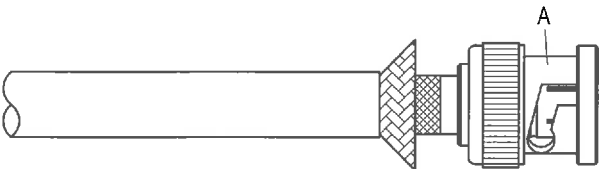
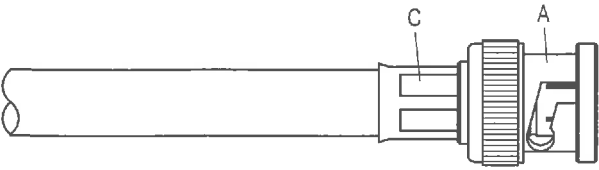
SCALE	RFV	UNITS
4 / 1	-	MM

APPROVED	DATE	TITLE
		BNC PLUG CRIMP
CHECKED	DATE	DRAWING NO.
		BNC3100-L300

**JYE BAO CO., LTD.**  
TAIPEI TAIWAN

# JYE BAO CO., LTD.

## CABLE ASSEMBLY INSTRUCTION

BNC3100-L300	DATE	2017/12/01	REV	—
<p>A</p>  <p style="text-align: center;">BODY</p>	<p>B</p>  <p style="text-align: center;">CONTACT PIN</p>	<p>C</p>  <p style="text-align: center;">FERRULE</p>		
DIAGRAM	ASSEMBLY INSTRUCTION			
	<p>Step 1: STRIP AS SHOWN.</p>			
	<p>Step 2: SLIDE FERRULE " C " OVER CABLE. Step 3: PUT PIN " B " ON CENTER CONDUCTOR AND SOLDER IN " Y ".</p>			
	<p>Step 4: LOOSEN BRAIDING AND SLIDE CONNECTOR " A " IN PLACE.</p>			
	<p>Step 5: SLIDE FERRULE " C " TOWARDS THE CONNECTOR " A " AND CRIMP. (USE 7.9mm/0.311inch HEX SECTION OF INSERT-D)</p>			
<p>This part number complies with RoHS. Notice: JYEBAO reserves the right to make modifications deemed appropriate.</p>				
APPROVED	CHECKED	DRAWING	<i>Albert</i>	